

Peterborough Museum & Art Gallery

A Visual Story



Contents

1. Arrival

2. Step free access

3. Entrance and Reception

4. Who will you meet

5. Getting around

6. Useful places

7. What you will see

- **The Jurassic Gallery**
- **Ice Age & Wildlife Galleries**
- **First People Gallery**
- **The Victorian Operating Theatre**
- **The Napoleonic Prison Camp**
- **Changing Lives Gallery**
- **City Gallery**

8. Evacuating the building

9. Arriving by train: a visual journey

1. Arrival

Welcome to Peterborough Museum & Art Gallery



Peterborough Museum is located on Priestgate Street.

Above the balcony you will see a sign that reads 'Museum'.

Our main entrance has two steps with a handrail and a single step without a handrail.

The Museum is open from 10am – 4pm Tuesday to Saturday and 12pm – 4pm on Sundays.

The last admission is at 3:30pm.

The roads around the Museum can get very busy and loud during the day, and you will hear the sounds of trains at the nearby railway.



If you are arriving by train, check out the arriving by train section for a visual journey from the station to the Museum.

2. Step free access

To the right of the Museum you will find a step free route to the entrance.

You will see signs that say 'Staff Car Park Private', it is ok for you to enter as a pedestrian, or if you have booked our disabled parking spot.



This area is regularly used. Please watch out for moving vehicles, and stay within the area outlined by red brick, next to the chained fence.

The Museums entrance doors look like this.



The doors are usually kept open when it is warm. If they are closed, you will find an automatic door button to the right of the door. We have put a yellow arrow on the photo above to show you where it is.

If you need any assistance you will find a door bell above the automatic door button.

3. Entrance & Reception

As you enter the Museum you will be greeted by a staff member on reception, or if we are busy by a staff member on the door.

They will answer any questions you have and tell you where our galleries and lifts are located.

If you do not wish to speak to them, that's ok and our staff will respect your choice.



Sometimes the Museum has large school groups visiting or special events and the entrance can become very loud and crowded.

Whilst you are visiting the Museum, we recommend that you maintain social distancing and wear a face covering.

Hand sanitiser dispensers are located throughout the Museum, for you to use.

To your left you will find the gift shop and to your right you will find the Café. You can buy souvenirs, food and drink in these areas.

To help keep our collections safe, please do not take your food and drink into the galleries.

In nice weather we may put tables outside the Museum on the grass. You can have your food and drink inside the Café or on the outside tables.



This is our reception and gift shop. A staff member will be here to greet you. You can buy shop items from them or ask them questions about the Museum.



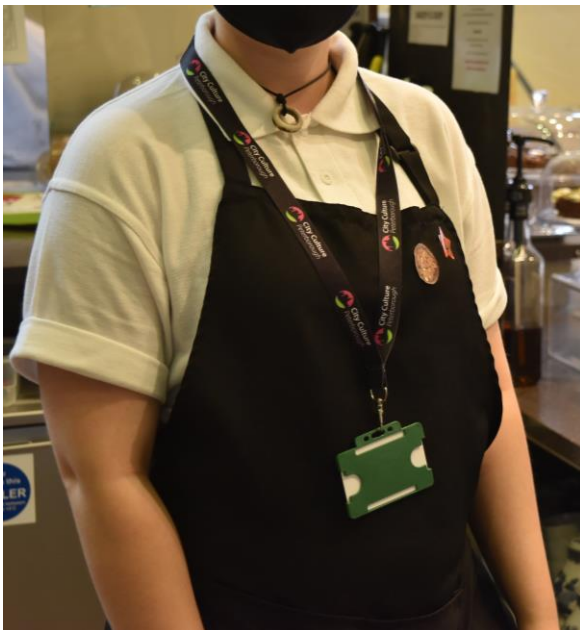
This is our Café called 'The Georgian Kitchen' you can buy and eat food and drink in this area.

The Museum is free to enter and you will not need a ticket.

Sometimes we have special events and exhibitions, when there will be a small charge to enter. Tickets for these can be bought at reception.

The Reception, Shop and Cafe areas are very bright. So are the corridors and the main staircase as you move around the Museum. There is lower lighting in our galleries.

4. Who will you meet



During your visit you will meet staff and volunteers working within the Museum and Gallery.

Our staff and volunteers all wear a lanyard and name badge.

In the Café our staff also wear a black apron.

Our buildings officers, who look after the building wear a green shirt, black trousers and big working boots.

You can ask any of our staff if you need assistance or if you have any questions about the Museum or Gallery.



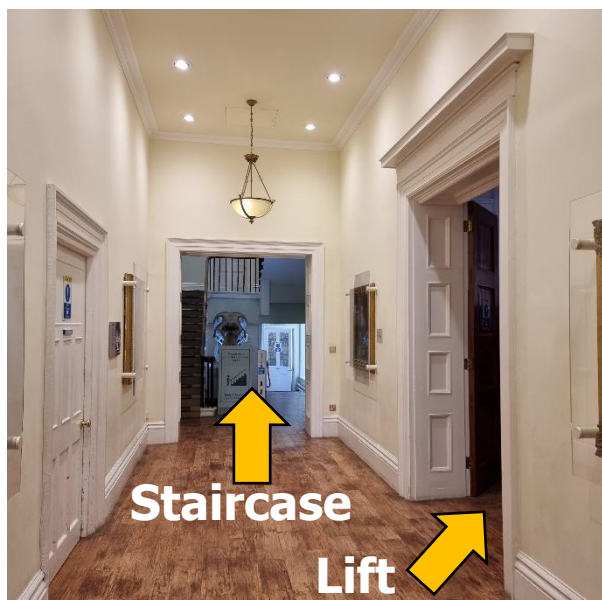
5. Getting around



To help you find your way around, there are maps of the building with tactile surfaces on every floor of the building.

The first map is in the entrance hall by reception.

To get to the galleries from reception, the shop or café, head to the staircase straight ahead of you at the end of the corridor. To use the lift, go into the first gallery on the right. The lift will be on your left.



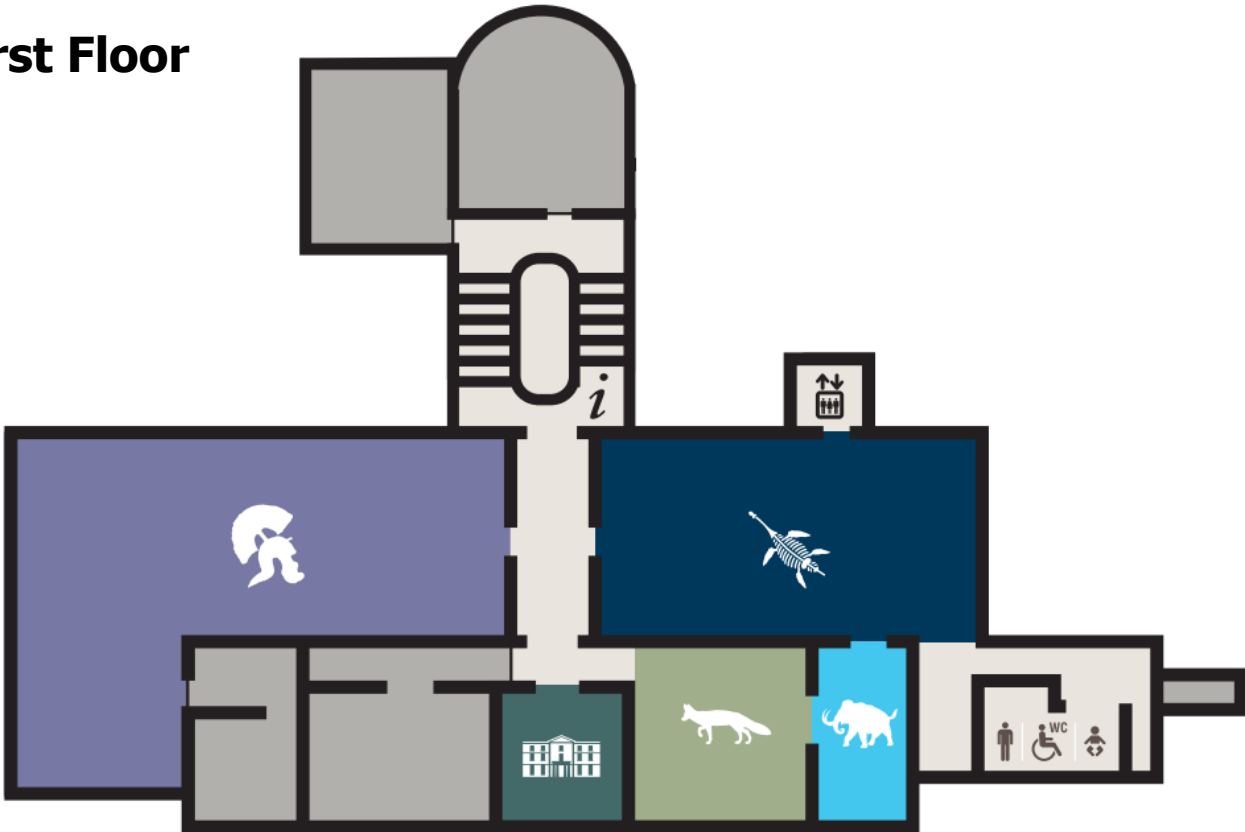
Our lift will be able to take you to the ground floor – **G**, the Art Gallery – **M**, the first floor – **1** and the second floor – **2**.

Our lift does not go to the Vaults or to the Victorian Operating Theatre. These areas do not have step free access.

Below you will see a map of the first and second floors.

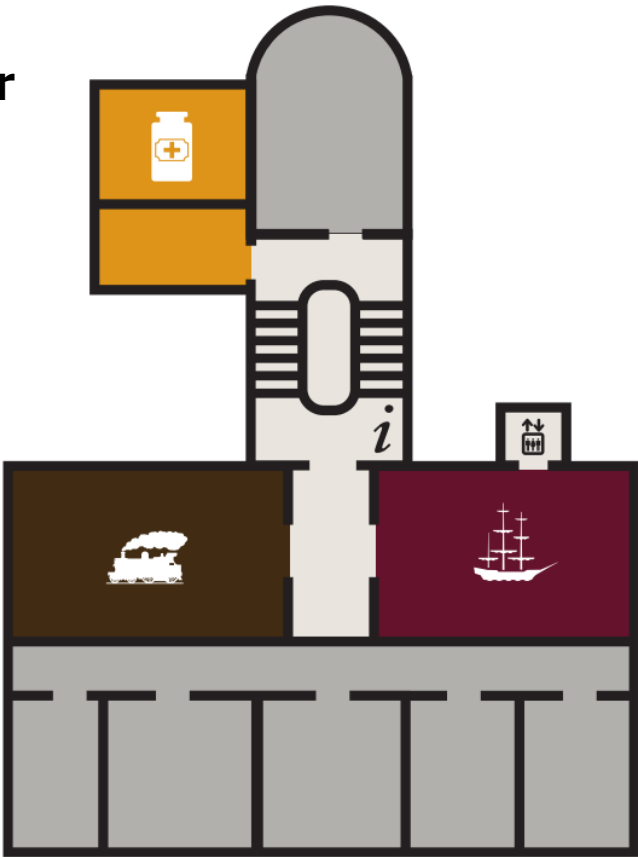


First Floor



- | | | |
|----------|-----------------------------|------------------------|
| Jurassic | First people | Napoleonic prison camp |
| Ice age | History of the building | Changing lives |
| Wildlife | Victorian operating theatre | |

Second Floor



6. Useful places



We have toilets on the ground floor and on the first floor.

Female toilets are on the ground floor, through the Café.

Male toilets are on the first floor, through the Jurassic Gallery.

The Museum has two accessible toilets with baby changing facilities. These are by the female and male toilets on the ground and first floor.



The closest Changing Places toilet is at the Car Haven, Bishop's Road. This is approximately 500m away from the Museum.

If you would like to leave a pushchair or belongings behind, please ask a member of staff where to leave them.

7. What you will see

Our galleries use lower lighting than the entrance and corridors. As you move around the galleries you will find lots for you to touch and explore.

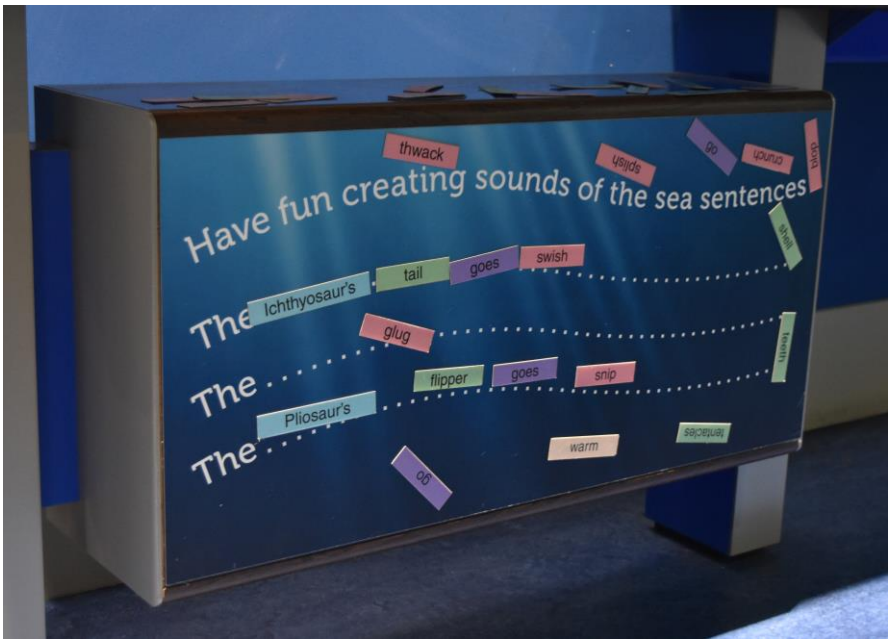
The Jurassic Gallery

Millions of years ago the area that is now Peterborough, was deep under a warm Jurassic Sea. Learn about the amazing creatures that once lived in this sea and what we have learnt from the fossils they left behind.

The Jurassic Gallery uses sound effects to recreate an Ocean atmosphere.

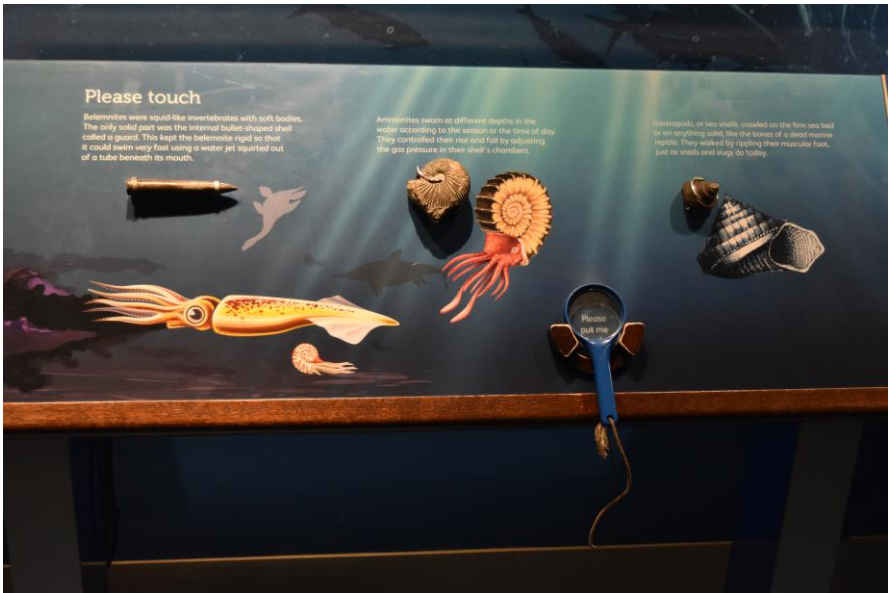
The **1st** floor lift opens into this gallery.





Create your own Jurassic themed sentences.

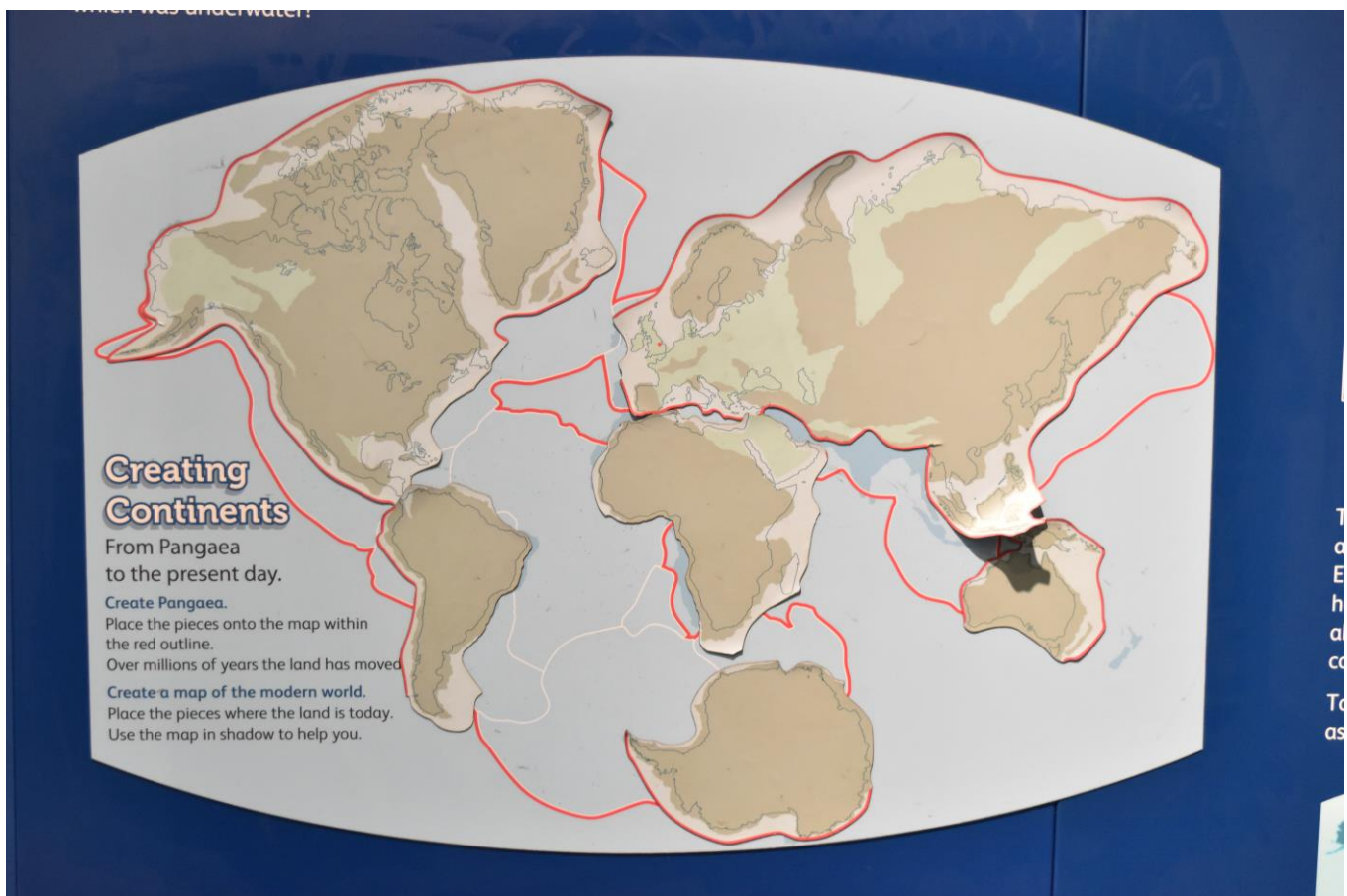
Handle real fossils of the ancient squid-like Belemnites and Ammonites. Touch the vertebrae of an Ichthyosaur and the paddle bone of long necked Plesiosaur.



At the Investigation Station you can discover what it is like to be a Palaeontologist. Learn how to identify fossils, read Dinosaur books or play some of our Dinosaur games.



Can you help our Palaeontologist to put the Crocodile skeleton back together?



Move the magnetic continents around and learn how the earth has changed over millions of years.

Ice Age & Wildlife Galleries

Discover the changing landscapes and creatures who have lived in the Peterborough area, from the Pleistocene (Ice Age) through to the modern period or Holocene.

Learn about and see some of the creatures that lived in these changing landscapes, including Elephants, Hippopotami, Mammoths and Woolly Rhinos.



Follow the migrating Mammoths as you step along their foot prints. Handle a real Mammoths tooth and compare it to your own.



Use the touch screen interactive stations to explore the different creatures and landscapes of modern Peterborough. You will hear recordings of local bird and animal sounds in the Wildlife gallery.



The ground between these two galleries is slightly raised and uneven.

First People Gallery

With over 500 objects on display, the first people gallery is an amazing space to learn about the history of Peterborough, from the Stone Age, through to the Medieval Period.

The first people gallery uses video with sound as part of its displays. Sometimes this can be very loud. Please ask a member of staff if you would like this turned down.



The first people gallery also houses a number of Human remains (skeletons), these are on the right as you move into the Prehistoric section of the gallery.



Learn how prehistoric people would create tools from stone and how these would be used. You can handle some replica tools and feel a prepared animal skin here.

Some of our displays have drawers that you can pull out to see even more objects. Sometimes you may find a drawer that won't open.

Do not pull hard, we may have locked this drawer if an object has been removed.

Look for "Open Me" stickers to see which drawers can be opened.





In our Roman section, there are lots of activities for you to explore.

Try to put a Vase back together and learn about the local colour coated style of pottery.



Handle Roman pottery and find out about all of the different types of pottery that were used in cooking, eating and drinking.

Learn about the types of coins used in Roman Britain and see if you can complete the coin puzzles.



Stay awhile and play a game as old as the Roman Empire, called Nine Men's Morris or try your hand at a game of Snap using Roman numerals.



Spin the different sections and see if you can match the clothing worn in different time periods. Sometimes these blocks can make a loud 'squeeeek' as they are moved.

Dress up in the height of medieval fashion, as you try on our selection of hats and learn about medieval life in Peterborough.



The Victorian Operating Theatre

Explore this building's medical history, in one of the countries last surviving historic operating theatres. Discover the grisly surgical practices of the past, with displays of original surgical equipment.

This gallery is very bright and uses sound effects of Doctors and Nurses working.

The Victorian Operating Theatre does not have step free access.



The Napoleonic Prison Camp

This gallery is dedicated to the Napoleonic Prison camp which was built at nearby Norman Cross. The camp was constructed in 1796 to house prisoners of the Napoleonic wars. Whilst imprisoned the prisoners created amazing works of art out of bone, wood and straw. Explore the history of the camp and learn about the lives of the people who inhabited it.

The Napoleonic Prison Camp gallery uses sound effects to recreate the atmosphere of camp life, you can hear several different languages being spoken.

The **2nd** floor lift opens into this gallery.



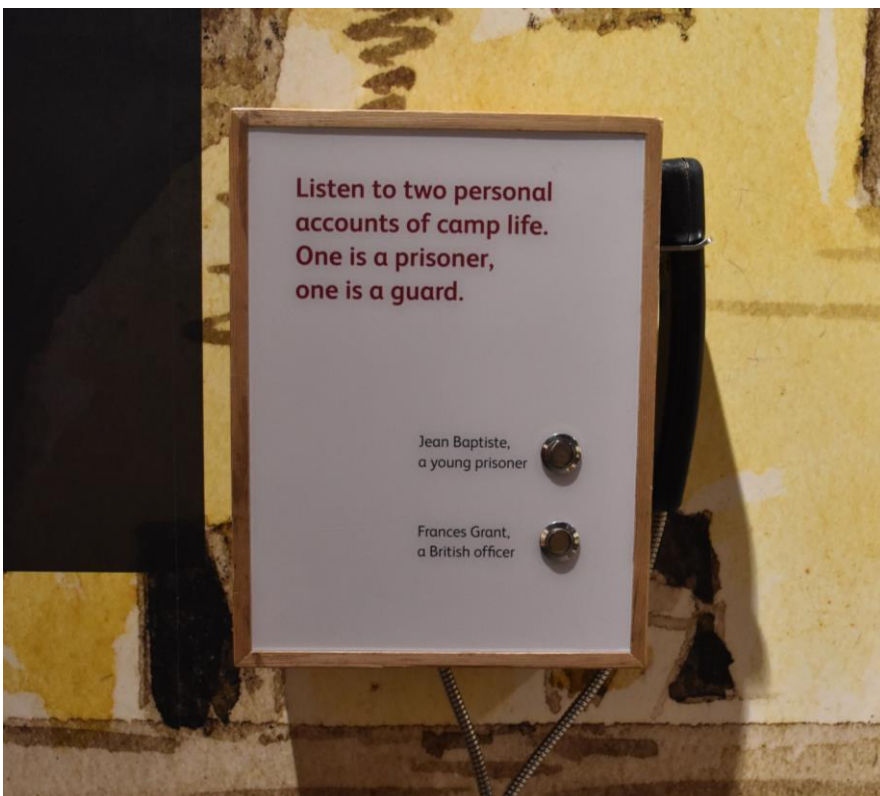


Learn about the processes the prisoners used to make the objects on display and handle the straw, bone and wood at different stages of production.



Explore the interactive model of the camp. Learn about all of the different buildings and what they were used for.

You can use the tactile map on the left to learn about all of the different areas of the camp.



Listen to two different accounts of camp life from the perspective of a guard and of a prisoner.

Use the buttons to select the different accounts.



Many prisoners tried to escape during their time at Norman Cross. Learn about their stories and have a go at making your own escape story below.

Crawl back through the escape tunnel or use the doorway and explore a recreated bunkhouse.

Sound effects are loudest within this part of the gallery.

The floor in this gallery is very uneven. There are also mirrors which make it look bigger than it really is.



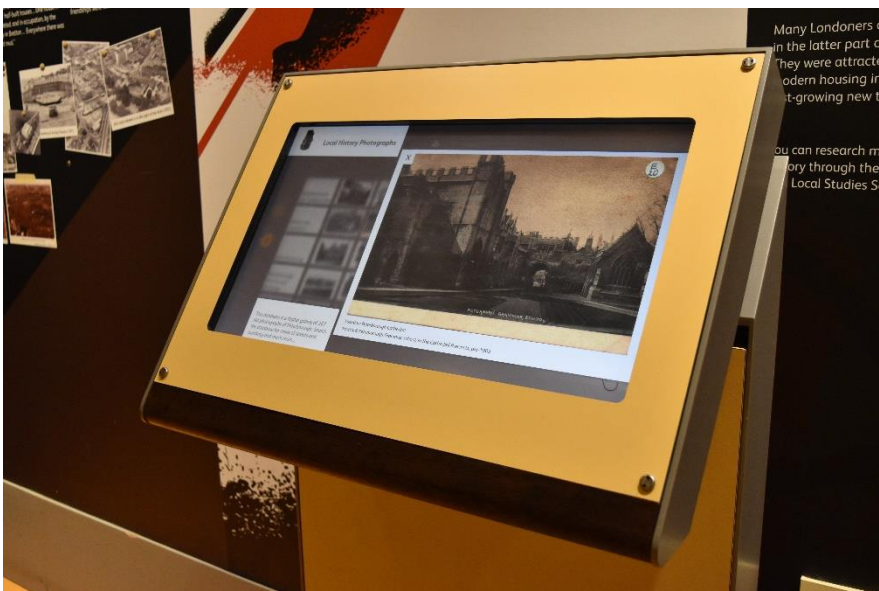
Changing Lives Gallery

Three hundred years of Peterborough's history are explored in this gallery. From rural farming to the modern multicultural city we see today. Discover how the railways, world wars and increasing wealth changed the lives and face of this city.

The Changing Lives gallery uses many different audio and video interactives. During busy periods this gallery can become very noisy and crowded.



Take a seat in the vintage cinema chairs and watch archive footage of Peterborough through time, including the story of Peterborough's very own fire breathers.



Use this touch screen interactive to look through old photographs of Peterborough in the past.



Pick up the phone and use the buttons to hear what it was like to work in one of the industries that shaped modern Peterborough.

Lift the flaps by the cemetery box and learn the origin of old sayings like "Money for old rope" and "Hanger-on".



Learn about Peterborough's railway history and while you are there, rummage through the luggage to try on the different historical hats.



Help the people working around Peterborough by delivering the correct tools. Can you work out what each of them is producing to sell at the local market?

City Gallery

The City Gallery is always changing, it is where we host exhibitions of Art and History throughout the year. The room can be very bright or very dark, very quiet or very noisy, if you would like to know the light and noise levels of the gallery before you visit, please email Museum@peterboroughlimited.co.uk.

There are six steps with hand rail support, leading into the art gallery. If you require step free access, please use the ground floor lift and take it to the Mezzanine, or **M** button within the lift.



8. Evacuating the building

If you hear a loud alarm or see flashing red lights whilst in the Museum or Gallery, you must leave the building as quickly and safely as possible.

Please take the safest and nearest route by following the signs around the building, or by following the instructions of a member of staff. Our members of staff will all have a lanyard and name badge.

Do not use the lifts during an alarm.



9. Arriving by train: a visual journey

This visual journey will take you from the Peterborough Station to Peterborough Museum & Art Gallery. This route is step free and approximately 550m in length.

Taxis can be booked from the train station, or one of the taxi ranks to the right of the station.

Peterborough Museum & Art Gallery, Priestgate, Peterborough, PE1 1LF

For additional information or assistance, please call 01733 864663 or email Museum@peterboroughlimited.co.uk



Turn right as you leave the station exit.



Take both sets of crossings and follow the path left, following the signs for City Centre, Cathedral and Museum.





Follow this path until you come to a T-Junction. Take the path to the left and then take the path downwards to the right.





Continue on this path, following the signs for the City Centre. You will pass under two underpasses.





Continue following the City Centre and Museum signs, heading down towards the second under pass.





After passing under the second underpass, follow the path up and around, where blue whales are painted onto the walls.





After the whales you will come to another crossing, you can take either the left or right side. Our guide will take the right turning.





Follow the path around and follow the brown Museum signs onto Priestgate. Note the street furniture taking path space.





We recommend that you use these two dropped curbs when crossing the road. This street can be busy, be aware of vehicles.





Above you will find a step free route to the entrance, this is located to the right of the Museum, through the sign posted staff car park. Be aware of moving vehicles and stay within the red bricked area. The stepped entrance consists of two steps with a rail and one step without rail support.

